

SPADONE

RUGGED + RELIABLE

FOR OVER 100 YEARS

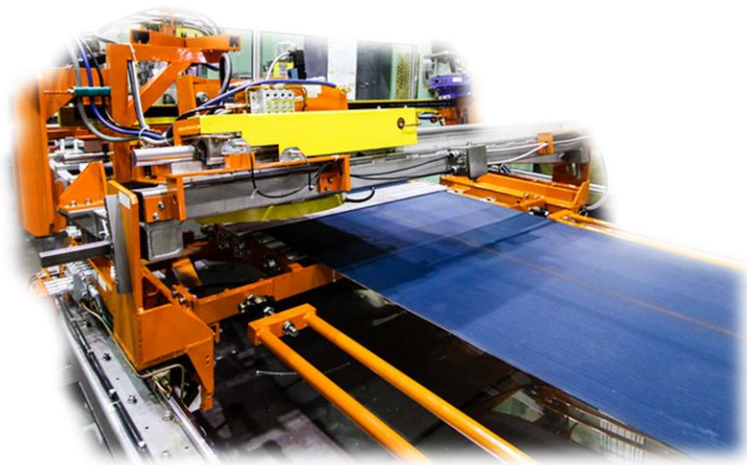
SERVO TREAD SKIVERS & UPGRADE KITS

White Sidewall Buffers & Sprayers | Vent Trimmers | Skivers | Bias Cutters | Guillotines
Alfa Shears | Web Handling | Trucks | Upgrade Kits | Spare Parts



www.spadonemachine.com

M7 SERVO TREAD SKIVER



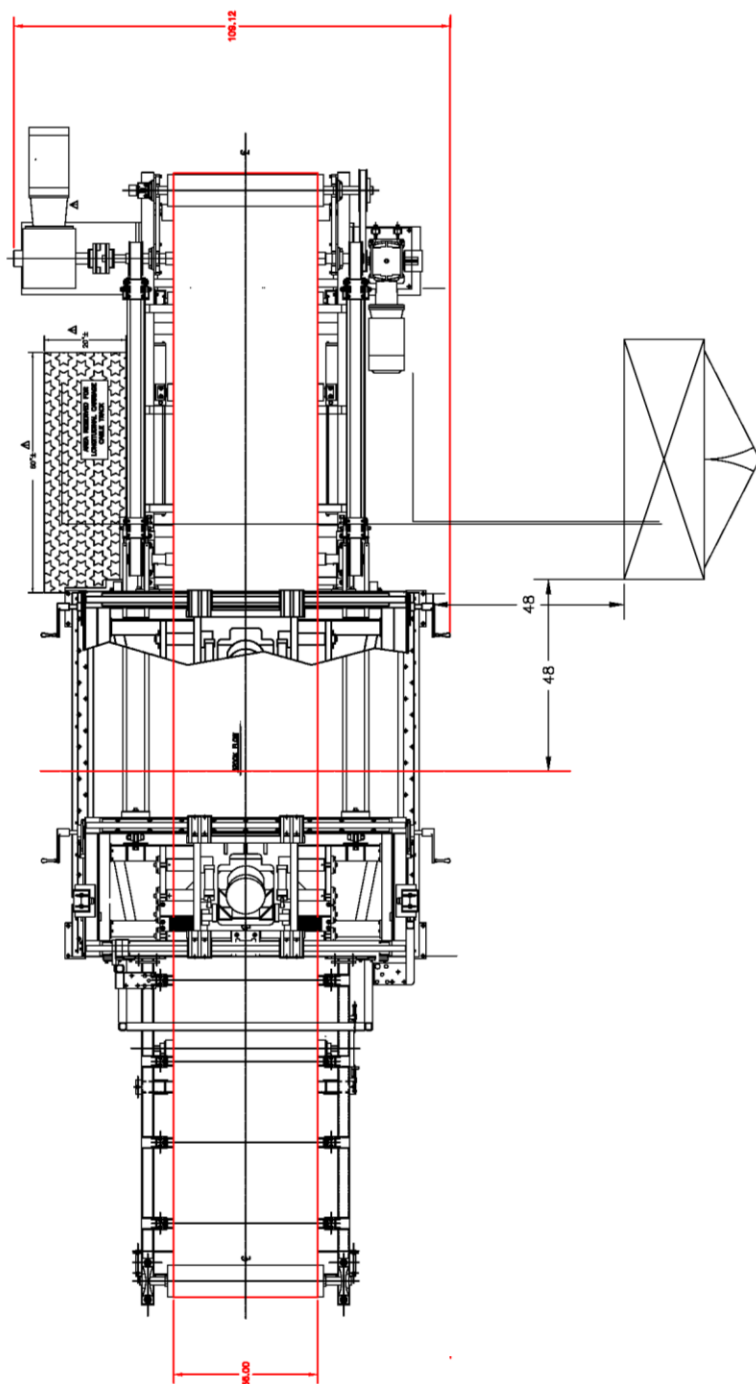
Technical Specifications

Spadone's M7 Servo Tread Skivers are designed for the most demanding applications. Since 1917, Spadone has manufactured rugged and dependable machines for the tire and rubber industry. Spadone's M7 Servo Tread Skiver is fully automatic, and designed to produce through a full range of line speeds while holding tight cutting tolerances. With a broad range of options and configurations, Spadone's M7 Servo Tread Skivers are designed with the highest production capability in mind.

Features

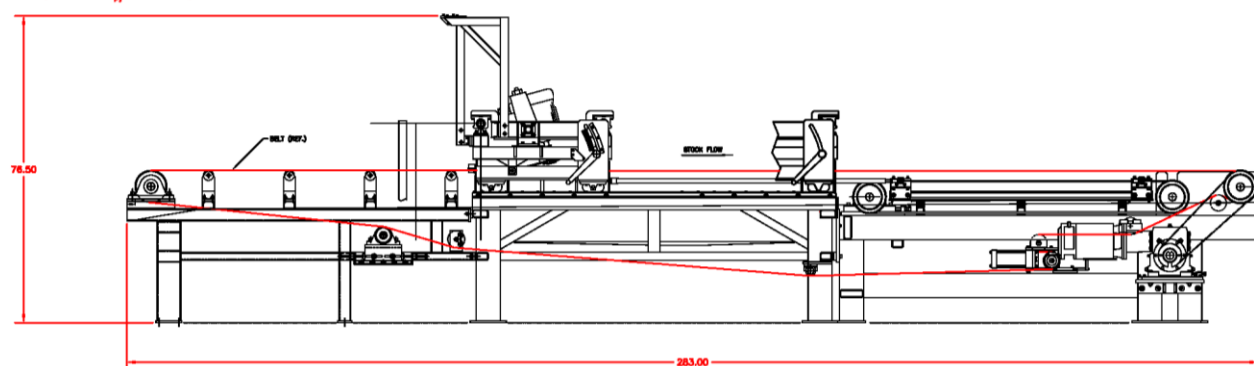
- Fully automatic
- Close accuracy
- High production capability
- Rugged and dependable
- Smooth and quiet operation
- Guarded for operator safety
- Allen Bradley PLC system
- Precise three Servo axis
- Water spray mist system
- Designed to customer specifications
- Production of 26 CPM
- Line speed in excess of 135 feet per minute
- No necessary shock absorbers, physical stops or clutches
- Optional dual conveyors for variable infeed and outfeed speeds

Illustrative Drawing



Specifications

Cycle Rate	26 CPM+
Line Speed	135 feet per minute+
Repeatability	+/- .060" or better
Length Control	Servo system with master scale encoder
Cut Length	150" max
Stock Width	36" Skiver: 32" 42" Skiver: 38"
Angle Adjustment Range	15° through 30°
Knife Motor	5 HP, AC, 1800 RPM, aluminum frame
Knife	20" diameter, can be resharpener to 18"
Knife Lubrication	Water spray mist system
Conveyor Belt	4 ply ribbed poly belt
Guarding	Complete, including floor mounted enclosure around moving carriages
Services Required	Electrical: adaptable to local requirements
Air	80 PSI max, 1" NPT feed line
Water	1/2" NPT feed line



M8 START / STOP SERVO TREAD SKIVER



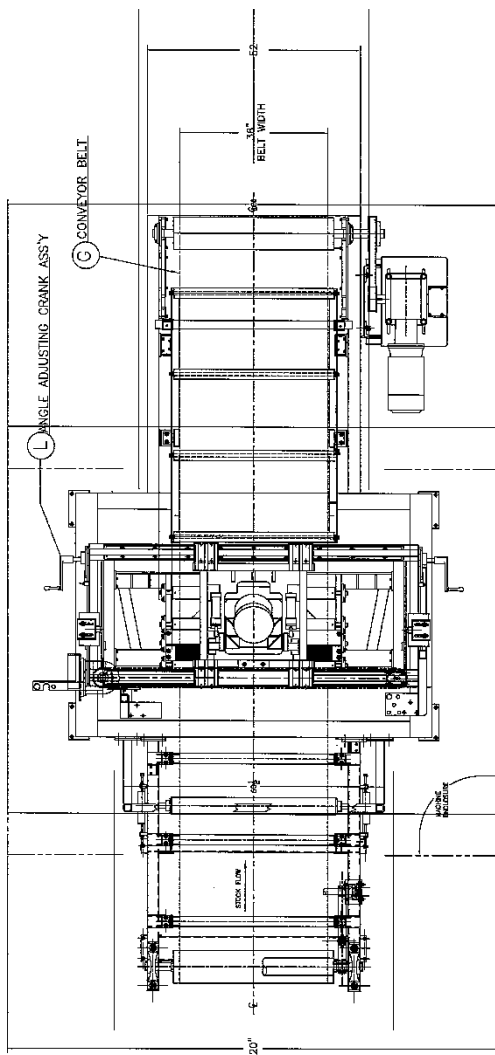
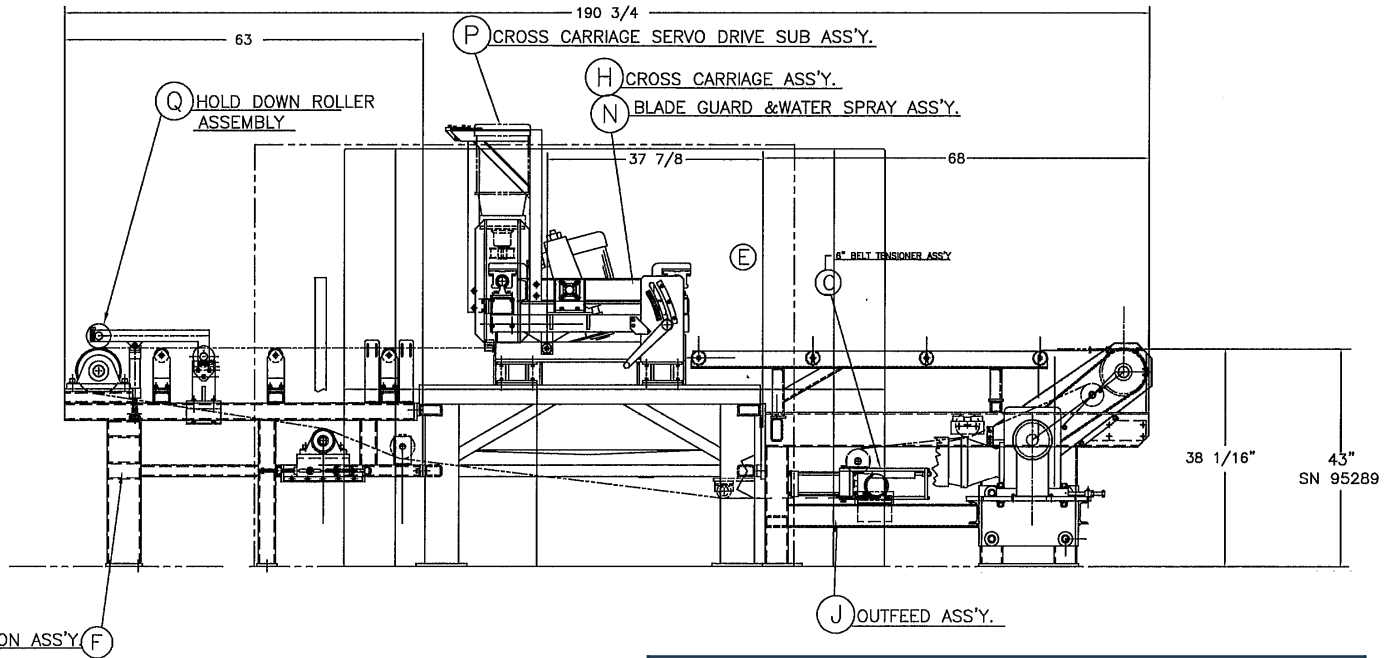
Technical Specifications

Spadone's M8 Start / Stop Servo Tread Skivers are designed for the most demanding applications. Since 1917, Spadone has manufactured rugged and dependable machines for the tire and rubber industry. Spadone's M8 Start / Stop Servo Tread Skiver is fully automatic, and designed to produce through a full range of line speeds while holding tight cutting tolerances. With a broad range of options and configurations, Spadone's Tread Skivers are designed with the highest production capability in mind.

Features

- Fully automatic
- Close accuracy
- High production capability
- Rugged and dependable
- Smooth and quiet operation
- Guarded for operator safety
- Allen Bradley PLC system
- Precise two Servo axis
- Water spray mist system
- Designed to customer specifications
- Production of 26 CPM
- Line speed in excess of 120 feet per minute
- No necessary shock absorbers, physical stops or clutches
- Optional dual conveyors for variable infeed and outfeed speeds

Illustrative Drawing



Specifications

Cycle Rate	26 CPM+
Line Speed	120 feet per minute+
Repeatability	+/- .060\" or better
Length Control	Servo system with master scale encoder
Cut Length	150\" max
Stock Width	36\" Skiver: 32\" 42\" Skiver: 38\"
Angle Adjustment Range	15° through 30°
Knife Motor	5 HP, AC, 1800 RPM, aluminum frame
Knife	20\" diameter, can be resharpened to 18\"
Knife Lubrication	Water spray mist system
Conveyor Belt	4 ply ribbed poly belt
Guarding	Complete, including floor mounted enclosure around moving carriages
Services Required	Electrical: adaptable to local requirements
Air	80 PSI max, 1\" NPT feed line
Water	1/2\" NPT feed line

UPGRADE KITS FOR SKIVERS

S1 – Conveyor Roller Kit

The kit consists of rollers with anti-friction sealed bearings which allow the conveyor rolls to turn freely with the belt and prevent flattening of the rollers.

S2 – Knife Motor Brake Safety Kit

Replaces the knife brake fuse with a single pole relay where the contact is wired into the knife circuit to prevent operation of the knife if the brake fails.

S3 – New Clutch and Linings Kit

Two new modified clutches and linings make the clutches more efficient and accurate by reducing engagement time. In addition, the new clutches do not need to be greased, eliminating the problem of grease contaminating the linings. The kit also includes an air regulator to enable the operator to set and maintain the proper clutch air pressure.

S4 – Longitudinal Carriage Cylinder and Rod Kit

New Longitudinal return cylinder rod is stainless steel to prevent corrosion and is provided with an alignment coupling. Cylinder is also provided with an enlarged intake and exhaust port pressure regulator. This optimizes the control and allows for a rapid exhaust of the air when clutches are engaged.

S5 – Quadrature Encoder Kit

Improves accuracy of the machine. Negates the affect of vibration, belt elasticity and negative rotation of the encoder shaft.

S6 – Cross Carriage Corner Safety Guards

A safety guard kit that covers pinch points on the cross cut carriage.

S7 – Solenoid Valve Kit for Clutches/Longitudinal Carriage Cylinder

Kit that replaces original pneumatic control with individual 24vdc solenoid valves, one for each clutch and the carriage return cylinder. Valves would be located close to each device and equally away to balance and optimize. Includes all necessary components for conversion.

S8 – Synthetic Belt Kit

Replaces Hot Stock and Water belt. Poly laminated belt does not stretch and tracks better. Must be hot-spliced upon assembly on site.

UPGRADE KITS FOR SKIVERS

S9 – Reinforce Outfeed Frame Kit

Frame reinforcement near the clutch mounting areas. Stiffens up the assembly to help reduce variance.

S10 – Head and Tail Pulley Kit

New head and tail pulleys with Trans-Torque Locking Bushings. Pulleys have low run-out specifications to improve belt tracking and accuracy.

S11 – Blade Guard and Fine Spray Kit

Upgraded blade guard makes knife changing easier and has improved spray nozzles for more effective cooling of the blade during the cut.

S12 – Cluster Roll Kit

Replaces the high maintenance belt rollers near the stock support bar. Rollers and shaft are integral and mounted in corrosion resistant flange bearings.

S13 – Cross Cut Carriage/Knife Lift Frame Modification

Adds wear pads to the knife carriage assembly and modifies the knife lift frame to accept the wear pads. The wear plates can then be replaced at regular maintenance intervals. Also a new knife motor pivot is provided that has a hardened steel sleeve bushing which prevents elongation of the pivot hole. A new knife lift frame, hardened bushings and needle bearings are provided. Requires some machining and assembly by customer.

S14 – Outfeed Frame Assembly Kit (Incorporates kits mentioned)

Incorporates a new outfeed assembly with larger shaft size and bearings for the head and sprocket pulleys. Requires installation and reconnection on-site.

- Frame is of heavier construction, eliminates the need for reinforcement and improves clutch mounting. (Kit-S9)
- Provides new clutches, linings and regulator. (Kit-S4)
- Adds new regulator and new longitudinal cylinder rod kit. (Kit-S4)
- New Solenoid valves and longitudinal cylinder. (Kit-S7)
- New belt tensioner assembly
- New head and tail pulley assemblies (Kit-S10)

SKIVER CARRIAGE REBUILDS

Equipment Repair, Refurbishment & Service

Extend the life of your investment through factory repair and refurbishment, bringing your Skiver to like-new condition.

- Rebuild technician specifically trained on refurbishing or servicing Spadone equipment.
- Spadone offers support and services on equipment installations throughout the world.

Before



After



RUGGED. DEPENDABLE. RELIABLE.

Spadone is the worldwide brand leader in equipment for the tire, rubber and industrial markets. Since 1917, Spadone equipment has proven to be rugged, reliable, and dependable. For over 100 years, Spadone has proudly manufactured in the USA. As the pioneer in bias cutters, Spadone continues to lead the way by providing the highest quality equipment to meet the growing needs of its customers throughout the world.

**INDUSTRY LEADING
PERFORMANCE
SINCE 1917**

SPADONE

spadonemachine.com



601 Davisville Rd, Willow Grove, PA 19090
P: 1.215.396.8005 E: sales@spadonemachine.com